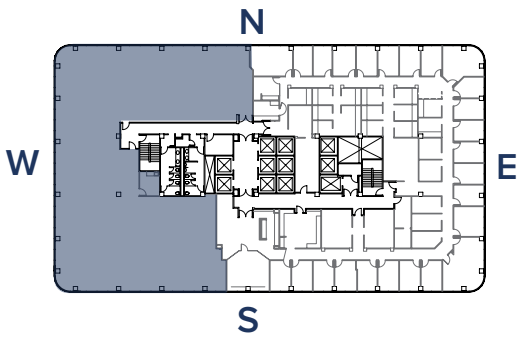
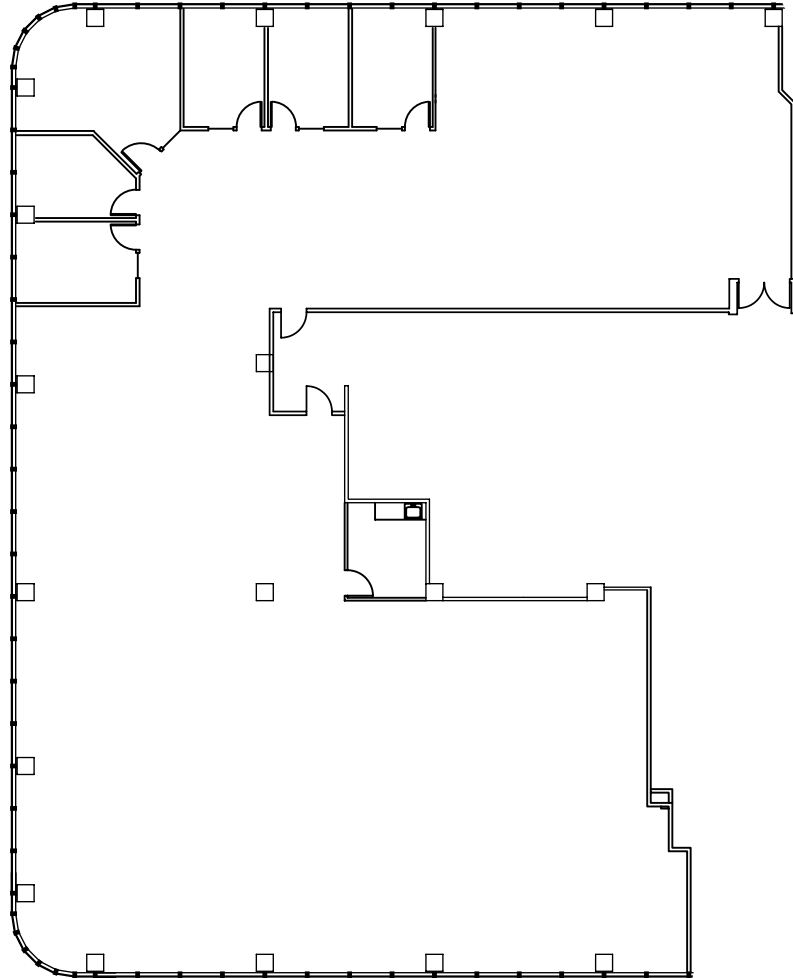


SUITE 850

701B
 701 B STREET
 SAN DIEGO, CA 92101
 Downtown



SUITE	850
RSF	9,714
STATUS	Vacant
DESCRIPTION	Double door entry, six offices and breakroom. Shell space. Upgraded lighting & ceiling tiles.

For Leasing Information, Please Contact

Derek Hulse | +1 858 334 4005
 derek.hulse@cushwake.com
 Lic. #01740180

Philip Roberts | +1 858 558 5651
 philip.roberts@cushwake.com
 Lic. #01908296

Owned & professionally managed by:

