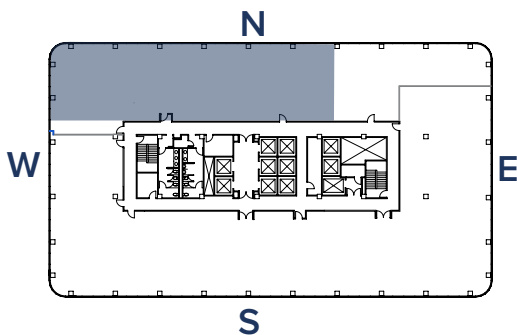
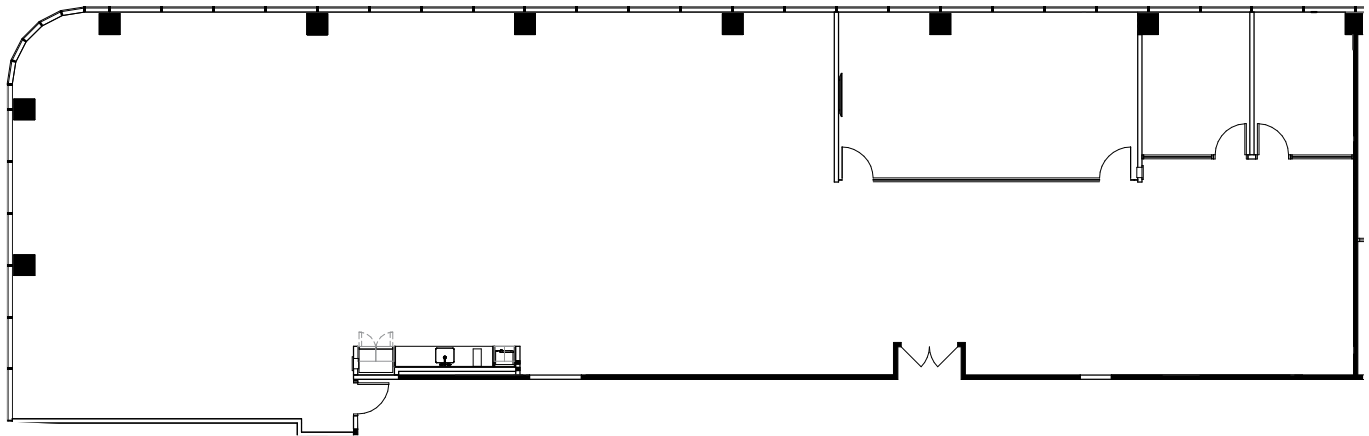


SUITE 1225

[CLICK HERE TO VIEW
VIRTUAL TOUR](#)



| | |
|-------------|--------|
| SUITE | 1225 |
| RSF | 5,469 |
| STATUS | Vacant |
| DESCRIPTION | |

Move-in Ready Spec Suite! Double-door entry, 2 window-lined offices, conference room with floor-to-ceiling glass, exposed ceiling and architectural ceiling cloud, open-style break area and large open office.

For Leasing Information, Please Contact

Derek Hulse | +1 858 334 4005
derek.hulse@cushwake.com
Lic. #01740180

Philip Roberts | +1 858 558 5651
philip.roberts@cushwake.com
Lic. #01908296

Morgan Reno | +1 858 558 5603
morgan.reno@cushwake.com
Lic. #02030032

Owned & professionally managed by:

